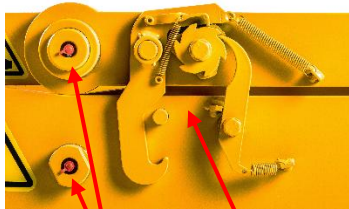




BSV scissor grab for concrete elements



Greaseable bolts

Automatic locking system

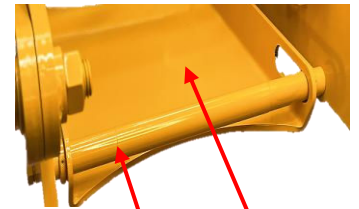


Shield for locking system



Changeable rubber pads

Hole for installing safety chain



Restrictor bar

Stop plate

BSV scissor grab type 262150 equipped with yoke with fork pockets and lifting eye is the easy way to lift and move Lego block concrete elements.

The grab has an automatic locking system, which means that it is gripping and releasing the block alternately of every lift, when operated by a crane operator.

It is also mounted with a restrictor bar to prevent hazards and injuries to operators.

All BSV grabs are 100% Danish produced and all grabs are tested at BSV's own test stand, therefore every grab comes with a test certificate.

BSV grabs are of course CE-marked and BSV is stocked with original spare parts.

Grab type	Jaw length	Span	Unit weight	WLL
262150	800 mm	400-800 mm	210 kg	2500 kg

